

Marcela K. Tello-Ruiz<sup>1</sup>, Sharon Wei<sup>1</sup>, Andrew Olson<sup>1</sup>, Justin Preece<sup>2</sup>, Joshua Stein<sup>1</sup>, Parul Gupta<sup>2</sup>, Sushma Naithani<sup>2</sup>, Yingping Jiao<sup>1</sup>, Bo Wang<sup>1</sup>, Kapeel Chougule<sup>1</sup>, Vivek Kumar<sup>1</sup>, Sunita Kumari<sup>1</sup>, Lifang Wang<sup>1</sup>, Peter D' Eustachio<sup>3</sup>, Bruno Contreras<sup>4</sup>, Irene Papatheodorou<sup>3</sup>, Pankaj Jaiswal<sup>2</sup>, and Doreen Ware<sup>1,5</sup>

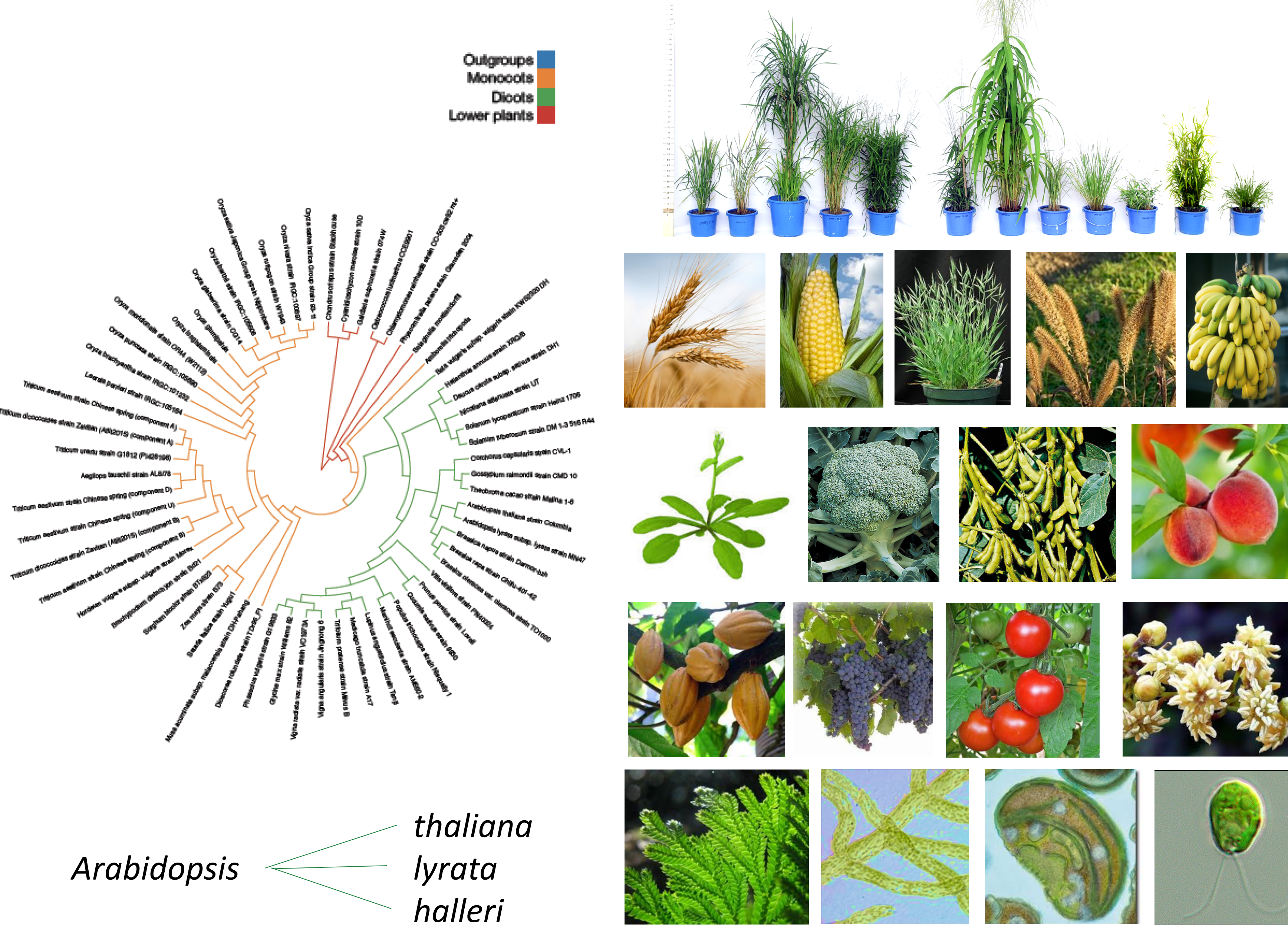
Produced in collaboration with



<sup>1</sup>Cold Spring Harbor Laboratory, Cold Spring Harbor, NY, USA, <sup>2</sup>Dept. of Botany and Plant Pathology, Oregon State University, Corvallis, OR, USA, <sup>3</sup>NYU School of Medicine, Dept. of Biochemistry & Molecular Pharmacology, New York, NY, USA, <sup>4</sup>EMBL-EBI, Hinxton, United Kingdom, 1L7, Canada, <sup>5</sup>USDA ARS NEA Robert W. Holley Center for Agriculture and Health, Cornell University, Ithaca, NY, USA

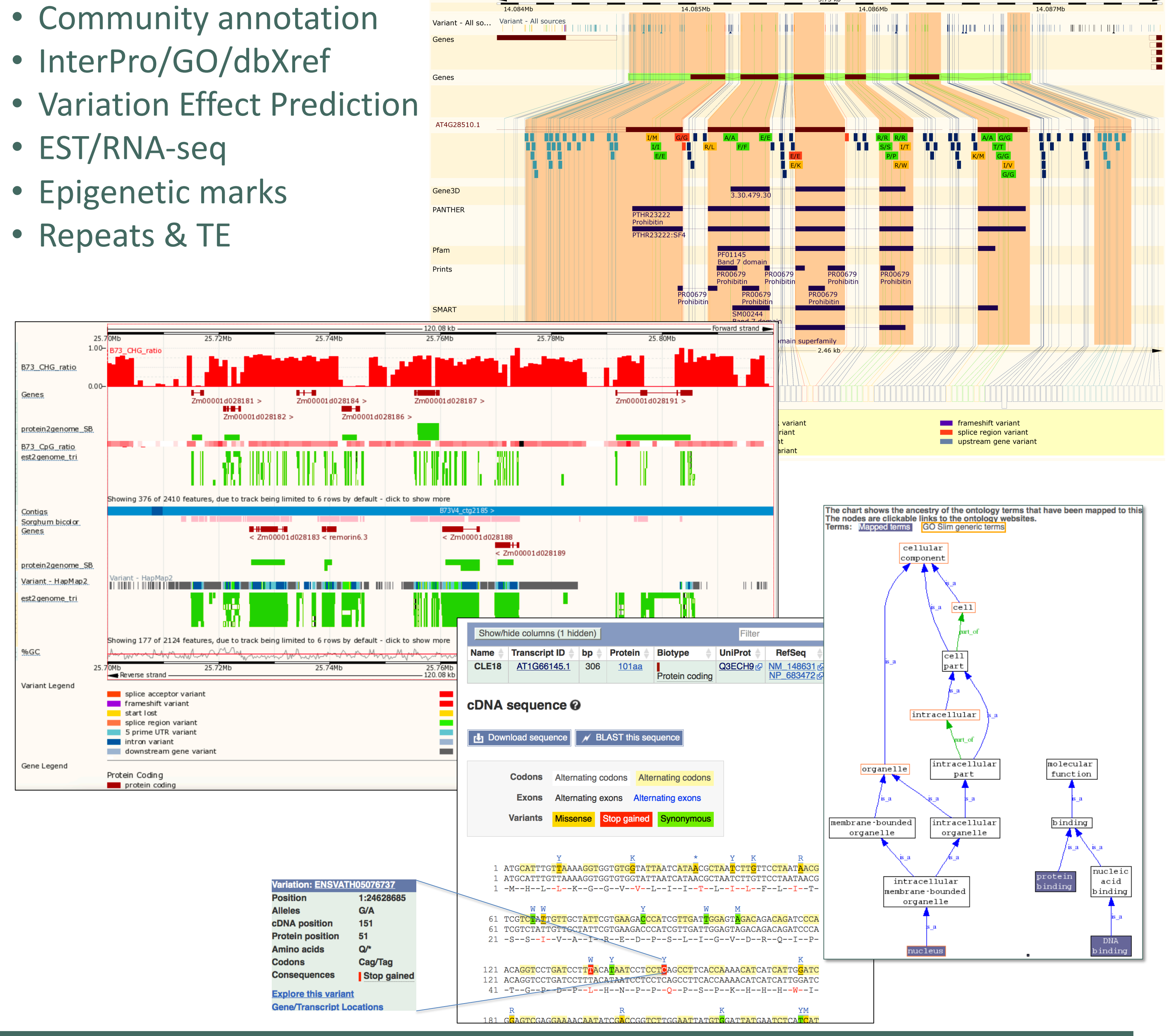
## A BOUNTY OF GENOMES

### 61 Plant Genomes in Build 61

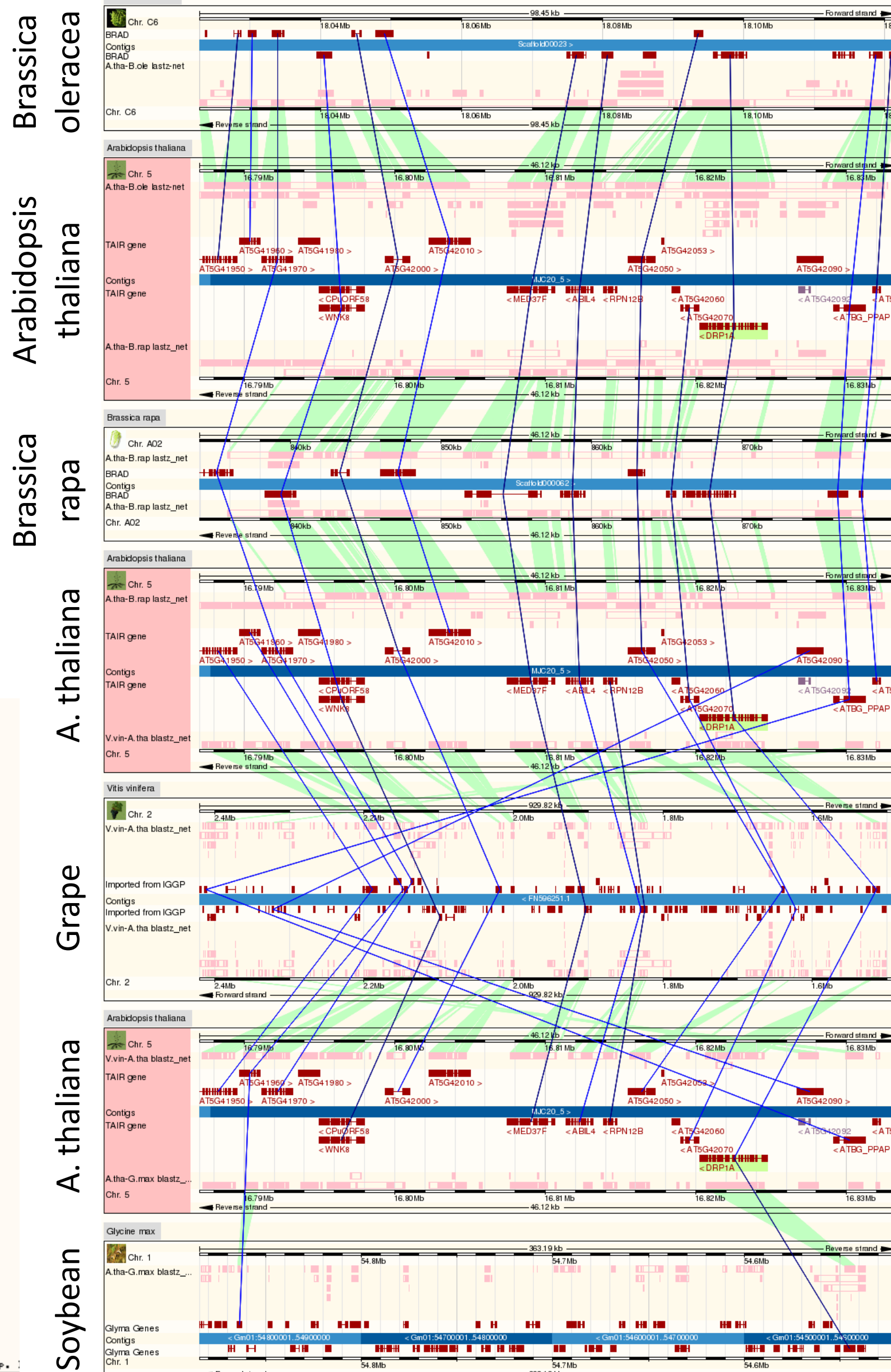
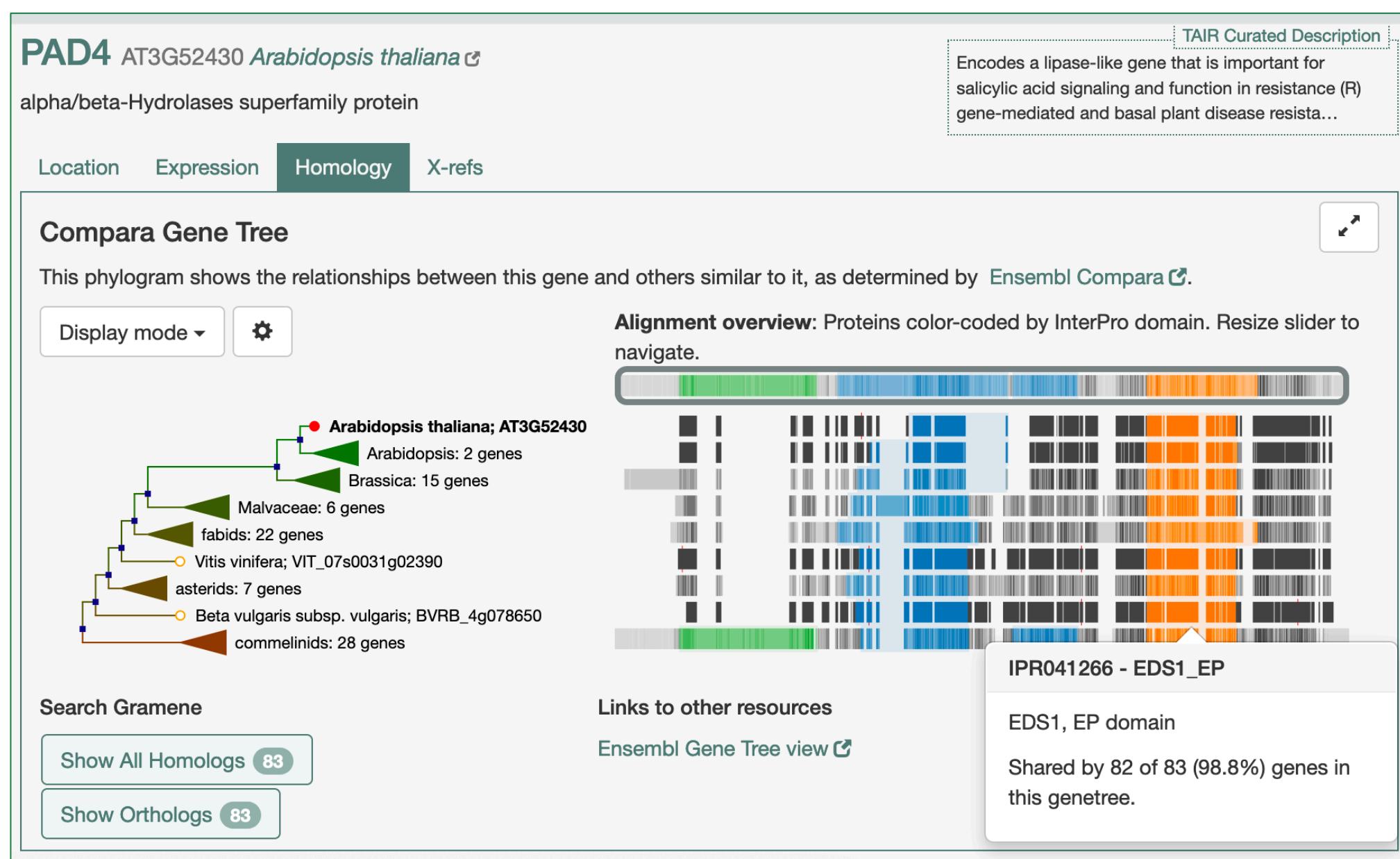


- Community annotation
- InterPro/GO/dbXref
- Variation Effect Prediction
- EST/RNA-seq
- Epigenetic marks
- Repeats & TE

## TO BROWSE



## TO COMPARE



### Phylogenetic Gene Trees

- Infers orthologs & paralogs
- Taxonomic dating
- Annotation overlays
- Export Newick & MSA
- dN, dS, dN/dS

### Synteny Maps

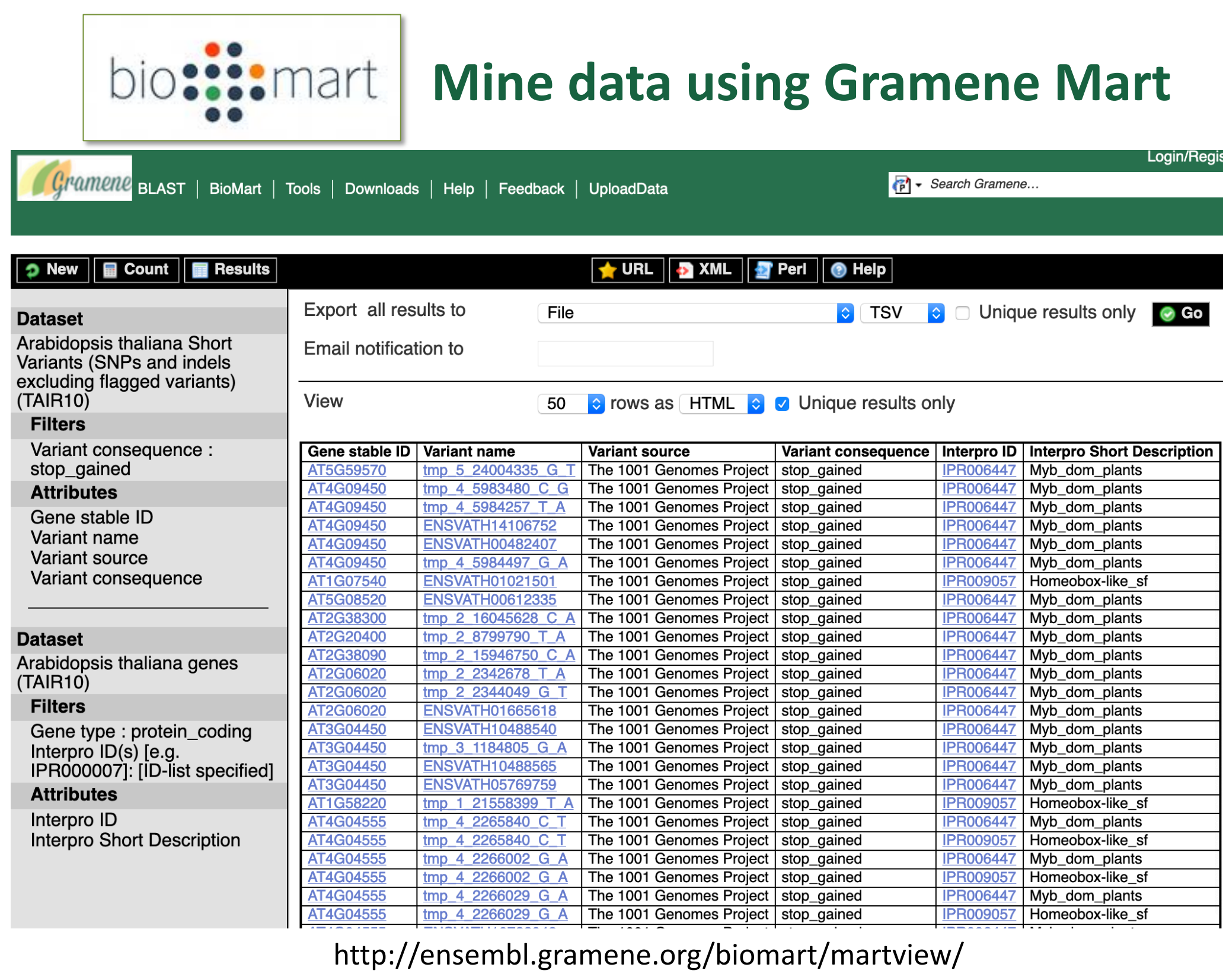
- Browse across genomes
- Find homoeologs via co-synteny

Dryas autumnalis genes	Location	Zea mays homologs	Location	Region Comparison
DnaI123888 (DnaI123888)	1,131,950-1,132,050	200001030200	1,143,251-1,143,351	Region Comparison
DnaI123889 (DnaI123889)	1,132,051-1,132,151	No homologues		Region Comparison
DnaI123890 (DnaI123890)	1,132,152-1,132,252	200001030200	1,143,352-1,143,452	Region Comparison
DnaI123891 (DnaI123891)	1,132,253-1,132,353	200001030200	1,143,453-1,143,553	Region Comparison
DnaI123892 (DnaI123892)	1,132,354-1,132,454	200001030200	1,143,554-1,143,654	Region Comparison
DnaI123893 (DnaI123893)	1,132,455-1,132,555	200001030200	1,143,655-1,143,755	Region Comparison

### Multi-species View

- Whole genome alignments
- Ortholog links

## TO DISCOVER



### Upload & view private data

- BAM
- VCF
- GFF
- BED

